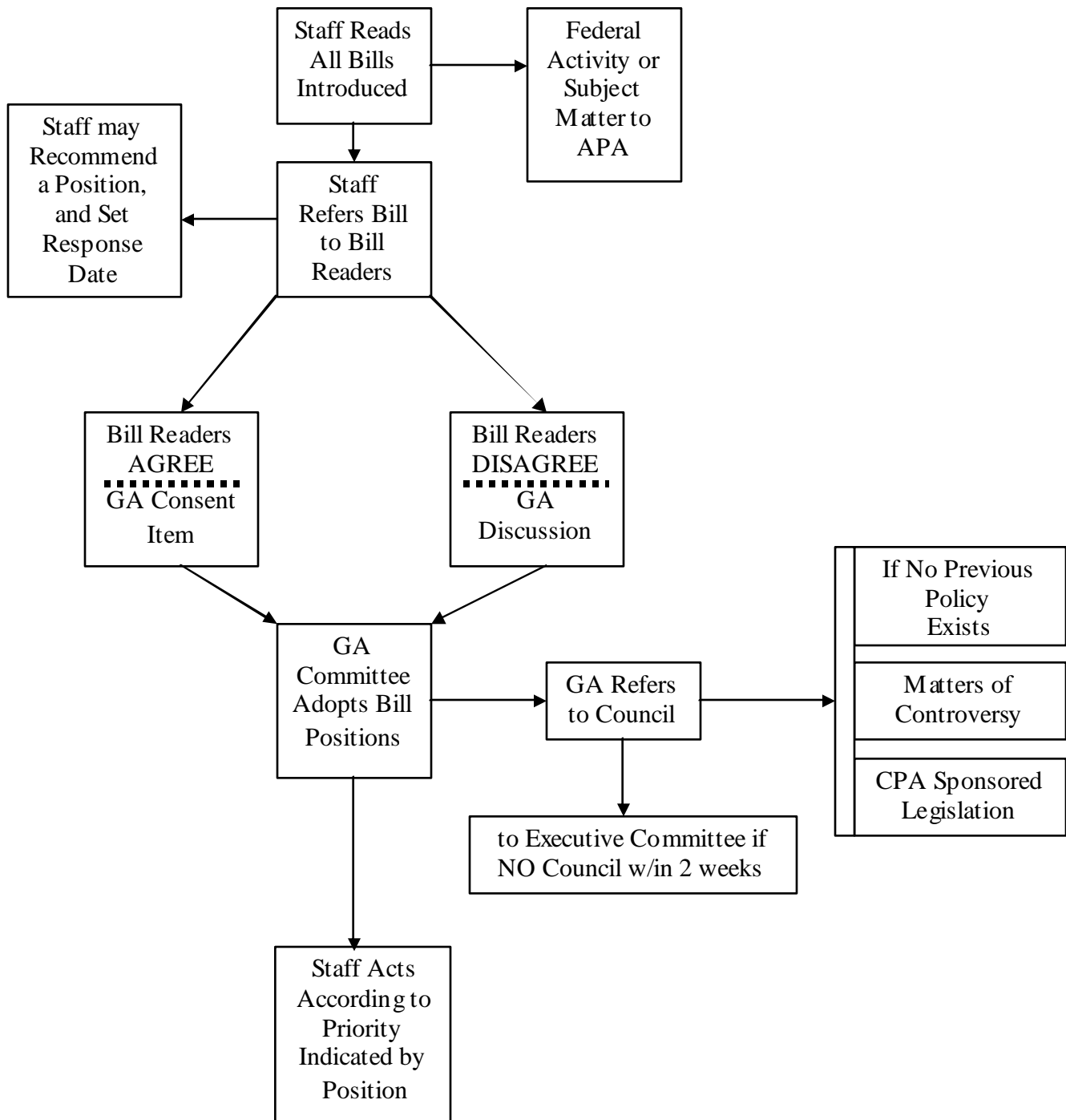




# CALIFORNIA PSYCHIATRIC ASSOCIATION

## Standard Bill Review Schematic

### GOVERNMENT AFFAIRS





### *C. P. A. Positions on Bills and What They Mean*

**SPONSOR.** CPA is the source of the bill and actively seeks its enactment.

**SUPPORT.** CPA actively supports the bill and actively lobbies it. High priority. Staff spends significant time lobbying. Key contacts may be asked from time to time to act on a sponsor or support bill.

**APPROVE.** CPA supports the bill, but it is a lower priority. Typically, we write the author in support (but if time requirements on priority bills interfere with the ability to do this, it is not necessary to weigh in), appear in committee only if requested by the author or sponsor, and may write the Governor requesting signature. No key contact involvement.

**SUPPORT IF AMENDED:** Specified amendments(s) needed before CPA can fully support. Letter requesting the amendments and offering support is made. Staff and experts from the membership, if needed, work on the amendments with author and/or committee staff. If amendments accepted, priority level is Support. Usually assigned the bills that have good policy in general, but need some work.

**APPROVE IF AMENDED:** Same as support if amended, with priority being at the approve level.

**AMEND, APPROVE & AMEND, SUPPORT & AMEND.** Can be added to support, approve, or watch bills, usually because the bill needs a technical amendment.

**WATCH.** Follow the bill, but take no position. Usually done with bills of interest to the membership, but on which CPA does not have a policy position.

**NO POSITION.** The bill has been through the bill review process, but is not of sufficient interest to follow.

**WATCH & REFER to \_\_\_\_.** Watch the bill and refer it to a designated CPA committee and/or expert(s) for further review. Or refer to a specified entity to find out their opinion and whether psychiatry should get involved, typically Watch and Refer to CMA, NAMI, CalACAP, CHA.

**OPPOSE.** Oppose the bill on policy grounds. Kill the bill, use key contacts to help.

**DISAPPROVE.** Low priority oppose bill. Applies to bills CPA opposes, but killing the bill is not an absolute necessity.

**OPPOSE UNLESS AMENDED OR DISAPPROVE UNLESS AMENDED.** CPA opposes/disapproves the bill in its current form, but the bill can be fixed to make CPA either be neutral or in support.

**COORDINATE WITH \_\_\_ CMA, CHA, NAMI, CalACAP, etc.** After taking a position or deferring taking a position, CPA contacts the named ally or allies to determine their position and to assure that what we are doing is consistent.